



David Fraser

National President
c/- School of Mathematical and Geospatial Sciences
RMIT University
GPO Box 2476V, Melbourne, 3001

Tel: +61 3 9925 3265 Fax: +61 3 9663 2517
david.fraser@rmit.edu.au
MSIA website: <http://www.mappingsciences.org.au/>

eCARTO newsletter

October 2009

An occasional electronic newsletter for members of the MSIA – contributions welcome.

If you have any brief items of interest to fellow MSIA members please email them to david.fraser@rmit.edu.au for eCARTO. If you have more substantial articles please send them to greg.heron@nt.gov.au for your magazine "Mapping Sciences National".

PLEASE INVITE ONE PERSON TO BECOME A MEMBER OF THE MSIA.

Membership application can be undertaken by visiting

<http://www.mappingsciences.org.au/member.htm>

-----000000-----

"Maps, to the layman at least, serve as reassurance to man that indeed the little plot he walks on is part of some greater whole; part of some grand design which maps allow him better to understand."
(Sir Ninian Stephen, 1984)

Conferences Update

Proposed ICA Symposium on Cartography for Australasia and Oceania / GeoCart'2010

1-4 September 2010 (Wed-Thu-Fri-Sat)
University of Auckland, Auckland, NZ
(Pencil this in your diary – more details later)

PCV 2010 – Photogrammetry Computer Vision and Image Analysis Conference

ISPRS Technical Commission III Symposium

September 1-3, Paris France

PCV is an ISPRS selective conference covering all the aspects of computer vision and image analysis dealing with geomatics data (or geographic data). Papers in the main technical program must describe high-quality, original research and will be presented either orally in a single track or as a poster.

(<http://pcv2010.ign.fr>)

Digital Earth Summit,

12-14 June 2010

Nessebar, Bulgaria

3rd International Conference on cartography and GIS

15-20 June 2010

Nessebar, Black Sea, BULGARIA

www.cartography-gis.com

58th German Cartographers Day 2010

Berlin and Potsdam

June 8-10, 2010

The German Cartographic Society (Deutsche Gesellschaft für Kartographie e.V., DGfK) and its Berlin-Brandenburg Section invite you to actively participate in the 58th German Cartographer's Day 2010 (Deutscher Kartographentag / DKT 2010).

Contributions are welcome in English or German language.

We offer an ideal platform to exchange experiences between experts and decision-making units coming from companies, universities, research institutions and administration all located within the broader domain of Cartography and Geoinformatics.

<http://dkt2010.dgfk.net/>

ISCRAM2010

Defining Crisis Management 3.0

7th International Conference on Information Systems for Crisis Response and Management

May 2-5 2010

Crowne Plaza Hotel Seattle Washington USA

Geo-Information Support for Crisis Response and Management

www.iscram.org

MSIA 'historical' news

Reflections:

2001 The Automobile Association of Britain paid a record \$57 million in an out-of-court settlement after it was caught using Ordnance Survey maps in its publications without permission.

2000 Dr Graeme Wright received his Doctorate from Curtin University of Technology

2000 Dr Brian Williams, Victorian cartographer and RMIT academic passed away.

2000 President Clinton gave the go ahead for civilians to access the same GPS accuracy as the military.

2000 The Minister for Industry, Science and Resources, Senator Nick Minchin, announced the membership of a steering group that will oversee the creation of an Action Agenda for Australia's spatial industry.

2000 Colin Arrowsmith won the MSIA President's Medal for the Cartography Journal article "Telecom Tectonics Using Geographic Information Systems".

2000 Peter Bowen made an Honorary Fellow of the MSIA

2000 A nationwide map of toilets was produced using Federal Government funding. Peter Schmidt, former chief executive officer of the Continence Foundation of Australia, said he strongly supported the project, which probably was a world first.

2000 Great National Mapping and MSIA identity David Hocking passed away.

2000 Lynne Furze (Victorian Division of the MSIA) passed away.

1999 A "Multimedia Cartography" book by W. Cartwright, M. Peterson & G. Gartner was published.

1999 John McCarthy BHP Engineering cartographer and MSIA National Councillor passed away

1999 John Robertson, lecturer in cartography at RMIT and MSIA National Councillor, passed away

1999 Fred Edwards awarded life membership of the MSIA

1998 The Australian Spatial Data Directory (ASDD) is launched.

1997 Dr Suzette Miller was admitted to the degree of Doctor of Philosophy through her research into multimedia map-based information products.

1996 Victorian cartographer Wally Bennett died in the Port Arthur massacre.

1995 MSIA National Councillors:

President- Ron Furness

Graeme Baker, John Hillier (ACT)

Alan Wallace, Bob Williams (SA)

Ron Furness, David McEwen, Jemmy Ghobrial (NSW)

Peter Bowen, Graeme Wright (WA)

Gita Pupedis, Brian Williams (VIC)

Bernie Freeman, Dave Davis (NT)

Alan Armitage, Des Diggles, Bob McIntosh, Stuart Nobbs, Keith Smith, Alan Unkles (QLD)

1995 MSIA membership:

ACT	104
NSW	194
VIC	392
WA	312
QLD	208
SA	75
NT	65
TOTAL	1351

International Cartographic Association

1984 12th I.C.A. Conference (1984)

This year (2009) marks the 25th anniversary of the 12th ICA Conference that was held in Perth, WA

The following individuals presented the opening addresses:

- Welcome address by Professor F.J. Ormeling
- Official Opening by the Governor-general, Sir Ninian Stephen
- Greetings from IGU by Professor Peter Scott
- Greetings from FIG by Charles Weir
- Greetings from ISPRS by Professor Gottfried Konecny
- Cartography in Australia by Con Veenstra
- Cartography in Western Australia by Ken McKenna

More than 50 people were involved in the organisation of the conference. *“Among the organisers was the primus inter pares, Don Pearce. He displayed the devotion of a priest, the precision of a heart surgeon, the inventiveness of a guerilla leader and the stamina of a rugby player.”* (Professor F.J. Ormeling – The 12th ICA Conference in Retrospect)

Below is a pictorial summary of this marvellous event which marked the entry of Australia into the International mainstream of cartography.



Presentation of a facsimile map to the Governor-General, Sir Ninian Stephen, by Australian Institute of Cartographers (AIC) President Dex Johnston.



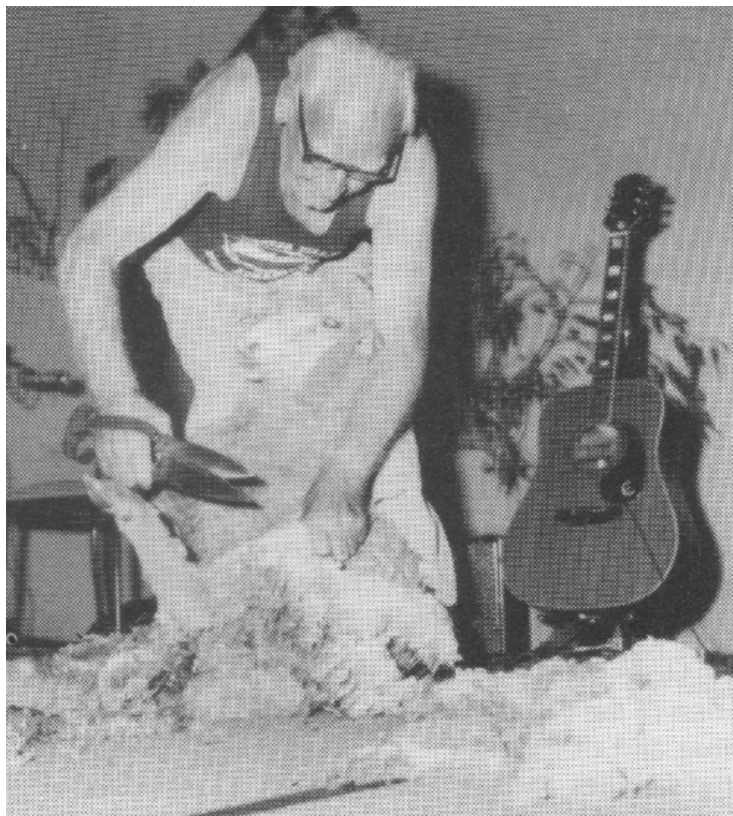
Musical performance at the ICA 25th Anniversary Dinner



Professor Ormeling delivering his Welcome Address



A typical scene during the 7th ICA general Assembly



Demonstration of sheep shearing during the ICA 25th Anniversary Dinner



Delegates in national costumes at the ICA 25th Anniversary Dinner



Closing Ceremony at the 12th ICA Conference

"It's remarkable what power you cartographers do wield in a modern world. The world as we visualise it is one of your making. You have implanted in the minds of all of us, pictures of the world fashioned around the conventions of map makers. We who grew up with Mercator's Projection on the wall have inhabited a planet top heavy with vast Greenland and still more vast northern Canada. We Australians live down-under, not up-over, only because of map makers and their conventions. And those of us who live in eastern Australia go up to Queensland, down to Antarctica and across to Western Australia because of the right-way-up concepts you have instilled in us." (Sir Ninian Stephen, 12th ICA Conference Opening Address, 1984)

(Thanks go to Peter Bowen for jogging my memory about this anniversary – The Editor)

ICA News - 50th Anniversary Special Edition

Well worth a look is this - Special Issue of the ICA News commemorating the 50th Anniversary celebrations of the ICA held in Bern, 9-10 June 2009 is now available from the 'Newsletter' section of the ICA website (Go to link below).



Participants of the 50th Anniversary of the International Cartographic Association meeting in Bern, Switzerland, 9-10 June 2009 | *Photography Thomas Maag*

<http://cartography.tuwien.ac.at/ica/index.php/Newsletter/Newsletter>

Cartography in the Media

Wealthiest Americans lose billions but “cartographer” makes the rich list

The top 400 richest people in the US have seen their collective wealth plummet by £188 billion over the last year

Francesca Steele
From Times Online
September 30, 2009

Plummeting property prices and faltering capital markets, as well as fraud and divorce, have caused a significant dent in the bank balances of the super-rich over the last year, although Bill Gates managed to retain his position at the top.

Among the 19 new entrants taking up the vacant spots on the list are Isaac Perlmutter, the Marvel Entertainment chief, in at No 230, and **the mapping software magnate Jack Dangermond** in at No 158.

http://business.timesonline.co.uk/tol/business/industry_sectors/article6856357.ece

Autism Gift – New York from memory.

After a short helicopter ride over New York, Steven Wiltshire is sketching a six metre panorama of the Manhattan skyline from memory. The London based artist has already sketched Sydney, London and Los Angeles from memory.



Source: The Age electronic – Tuesday 27th October, 2009

Google unveils GPS for android phones

The Age - AFP
October 29, 2009 - 11:28AM



Motorola Droid ... the first smartphone to feature Google Maps Navigation. Photo: AP

Google has unveiled a free navigation system for mobile phones in a move seen as a potential challenge to the makers of standalone GPS navigation devices.

"Global positioning devices were already on the road to becoming irrelevant and Google Maps Navigation for Android 2.0 may speed up the trip," wrote Larry Dignan, editor-in-chief of technology blog ZDNet.

<http://www.theage.com.au/digital-life/cartech/google-unveils-gps-for-android-phones-20091029-hlza.html>

NASA to begin massive climate survey of Antarctica

October 9, 2009

The Age

© 2009 [AFP](#)

NASA next week begins the most extensive aerial survey of Earth's surface to chart the impact of global warming, with six years of flights over Antarctica to understand the frozen continent's glaciers and ice sheets.

The US space agency said the massive aerial survey, part of a program dubbed Operation Ice Bridge, will get underway on October 15.

Data gathered during the mission will help scientists predict how changes to the massive Antarctic ice sheet will contribute to a rise in sea levels around the world.

Researchers will work from NASA's DC-8, an airborne laboratory equipped with laser mapping instruments, ice-penetrating radar and gravity instruments.

<http://news.theage.com.au/breaking-news-world/nasa-to-begin-massive-climate-survey-of-antarctica-20091009-gpdj.html>

Google Earth climate change 3D map unveiled

ASHER MOSES

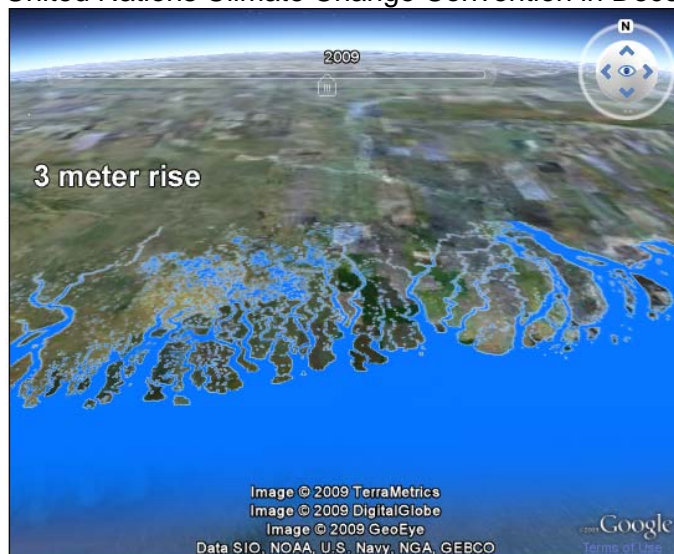
September 28, 2009 - 12:26PM

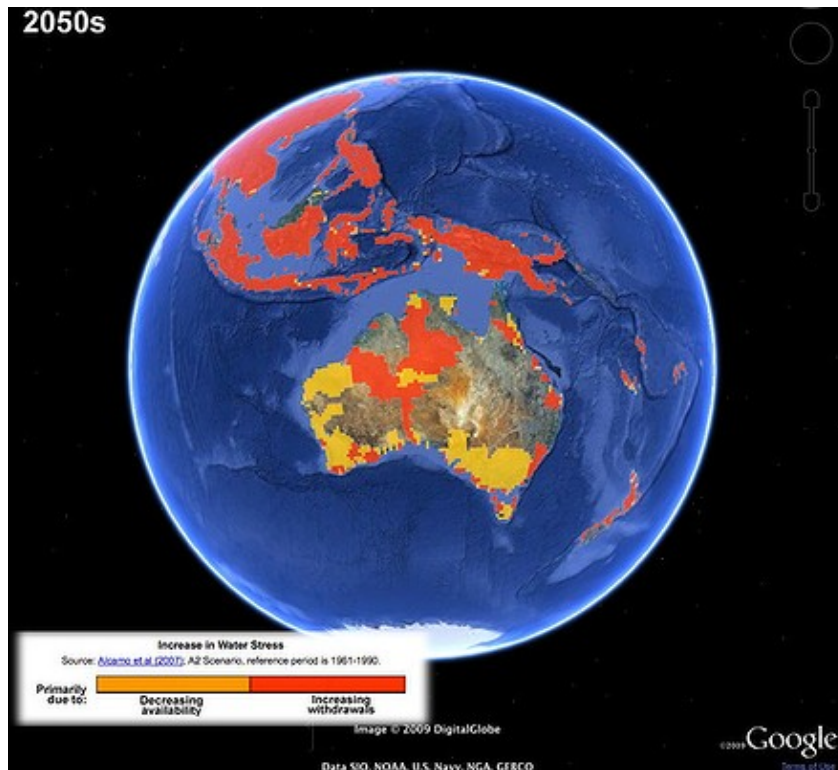
Google Earth climate tour

Google is using its Google Earth mapping tool to simulate on a 3D map of the world the predicted effects of climate change until the year 2100.

Using data provided by the Intergovernmental Panel on Climate Change, the search giant created [new layers for Google Earth](#) showing the range of expected temperature and precipitation changes under different global emissions scenarios that could occur throughout the century.

The new tools were introduced in partnership with the Danish Government ahead of the United Nations Climate Change Convention in December.





(Go to link)

<http://www.google.com/landing/cop15/#intro>

China completes 3D moon map: state media

September 29, 2009 - 4:49PM

The Age

© 2009 [AFP](#)

China has completed a high-resolution, three-dimensional map of the entire surface of the moon, state media says.

The map was made using image data obtained by a camera on China's first lunar probe - the Chang'e 1 - launched in October 2007, the official Xinhua news agency said late on Monday.

Quoting Liu Xianlin, an academic at the Chinese Academy of Surveying and Mapping, the report said the map would help scientists study the features of the moon's surface and deepen understanding of lunar geology and its evolution.

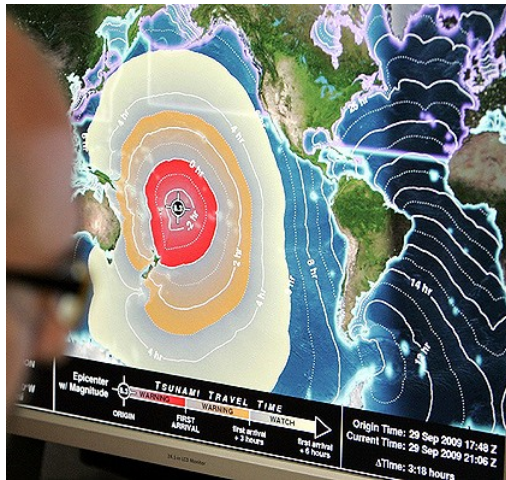
(Go to link)

<http://news.theage.com.au/breaking-news-world/china-completes-3d-moon-map-state-media-20090929-gato.html>

The Value of Cartography

Pacific tsunami alert

September 30, 2009 - 12:59PM
The Brisbane Times



Christopher Moore (foreground) of the National Oceanic and Atmospheric Administration looks at computer graphs at the Pacific Tsunami Warning Center in Ewa Beach, Hawaii. *Photo: Hugh Gentry*
<http://www.brisbanetimes.com.au/world/villagers-die-as-massive-quake-triggers-pacific-tsunami-alert-20090930-gbcr.html?autostart=1>

Cartographic Resources

Relief shading

www.reliefshading.com

International Society for Photogrammetry and Remote Sensing

Highlights No.9 October 2009 Issue ISSN0717-2931

<http://www.isprshighlights.org/download/isprshighlights-oct09.pdf>

Google Scholar

Go to Google Scholar (from Google search engine > more) and search CARTOGRAPHY 2009 for a list of textbooks and key article on cartography.

http://scholar.google.com.au/scholar?hl=en&q=cartography+2009&btnG=Search&as_ylo=&as_vis=0

Books on Cartography

Geographic Information And Cartography For Risk And Crises Management: Towards Better Solutions

Author: Milan Konecny, Sisi Zlatanova, Temenoujka L. Bandrova

ISBN:

3642034411

ISBN-13:

9783642034411

Binding: Hardcover

Publishing Date: Feb 2010

Publisher: Springer

Number of Pages: 400

Language: English

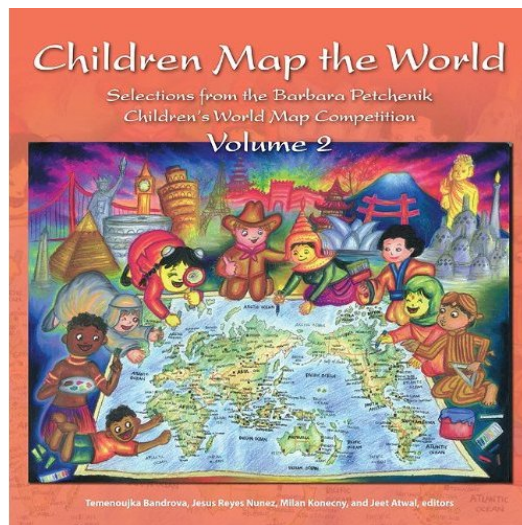
Cartography and geographic information (GI) are remarkably appropriate for early warning (EW) and crises management (CM) needs. Use of geospatial technology has tremendously increased in the last several years. ICT has changed from just using maps created in advance to new approaches allowing individuals (decision-makers) to use cartography interactively, on the basis of individual user's requirement. The new generation of cartographic visualizations based on standardisation, formal

modelling, use of sensors, semantics and ontology, allows for better adaptation of information to the needs of the users. To design a new culture in pre-disaster and disaster management it is also needed to consider safety/security/privacy aspects of institutions and citizens. All this can be achieved only by demonstrating new research achievements, sharing best practices (e.g. in the health area) and working towards wider society acceptance of geospatial technology (e.g. with the help education and media). This book will outline research frontiers and applications of cartography and GI in EW and CM and document their roles and potentials in wider processes going on in information/knowledge-based societies.

<http://www.flipkart.com/geographic-information-cartography-risk-crises/3642034411-4dz3fp1vnb>

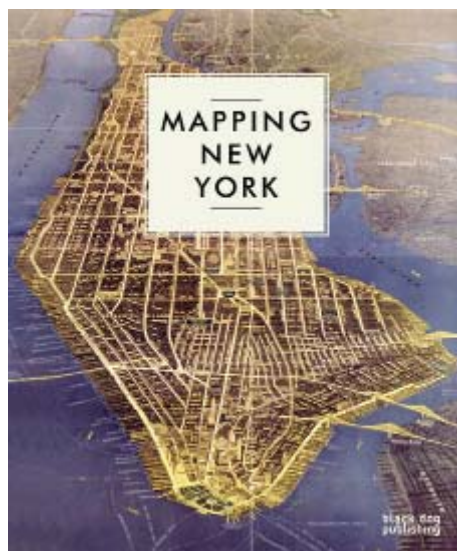
Children Map the World: Selections from the Barbara Petchenik Children's World Map Competition (Paperback)

by [Temenoujka Bandrova](#) (Author), [Jesus Reyes Nunez](#) (Author), [Milan Konecny](#) (Author)



<http://www.amazon.co.uk/Children-Map-World-Selections-Competition/dp/1589482468>

MAPPING NEW YORK



Contributors: Seth Robbins
and Robert Neuwirth

October 2009

'Mapping New York is a fascinating and richly illustrated survey of the urban and social history of New York City. From early woodblock engravings to the latest satellite images

available of Manhattan, these maps show the intricate story of the development of one of the world's most populous cities."

Hardback
272 pages
216 b/w and color ills
11.5 x 9.5 in
ISBN13: 978 1 906155 82 7
UK £29.95

Also available: Mapping London: Making Sense of the City <http://blackdogonline.com/all-books/mapping-london.html>

Mapping England <http://blackdogonline.com/all-books/mapping-england.html>

(Go to link)

www.blackdogonline.com

DVDs on Maps & Mapmaking

The Map of the Great Explorers (Part I: Columbus, Vespucci, Magellan)



2009

Distributed by [Landmark Media, Inc.](http://www.landmarkmedia.com), 3450 Slade Run Drive, Falls Church, VA 22042; 1-800-342-4336 Produced by Jean Luc Millan, Grand Angle Distribution; Director n/a DVD, color, 25 min.; Jr. High – Adult; European Studies, History, Geography, Storytelling

[Reviewed by Brad Eden, Associate University Librarian for Technical Services and Scholarly Communication, University of California, Santa Barbara](http://www.libraryofcalifornia.org)

Date Entered: 9/18/2009

This is Part 1 of a two-part series on the explorers of the New World. The three explorers Columbus, Vespucci, and Magellan and their voyages are not only accounted for here, but also their contributions to mapmaking and geography and how their voyages helped to expand and change the world view of their own time and subsequent time periods. This volume provides a short history of maps in the Middle Ages, Portugal and the spice trade, each of the above-mentioned explorers, and a quick discussion of Patagonia and the crossing of the Pacific. An interesting, if rather short presentation of three major historical explorers and their influence on mapmaking and geography.

Mapping environmental disasters bushfires and threatened species.

by Garner, Simon.; Doolan, Kieran.; Hancox, Glen.; Learning Essentials (Firm)

When natural disasters like fire strike the Australian landscape, maps are used to help us immediately deal with the problem, determine the impact on people and the environment and plan for another such event. This program explores the important role different types of maps play in managing the impact of fire, how technology complements the use of paper maps and what maps can do to help people protect threatened species. ANBD:000026344316

<http://lil02.nla.gov.au/resource/5664d536-0d30-4f25-91a2-38b8f640c2b4>

Special Feature - Cartography in the movies

VIDEO > MacGyver – How to Use a Map

According to MacGyver, a map "can get you in and out of places a lot of different ways" other than just getting yourself from point A to point B. As this video clearly shows, a map can help you unlock doors, distract women in burkas and beat an armed guard senseless: (7.12 minute You Tube video)

<http://www.youtube.com/watch?v=mOY4BnsddKE>

MOVIE > The Englishman Who Went Up A Hill But Came Down A Mountain –



Movie Review

10 June 2009 6:49 PM, PDT |

There are some stories that seem incredibly simple, if you boil them down as far as they go, which are actually very complicated. We enter that story as cartographers, on their rounds measuring the heights of mountains (and hills), come to the sleepy village that lies in the shadow of Ffynnon Garw, in the south of Wales. Trouble rears its head pretty quickly, as these cartographers mention some doubt that Ffynnon Garw is more than a thousand feet, the height required to be deemed a mountain. »

- Marc Eastman

(One of my favourite movies available for rental on DVD – David Fraser)

<http://www.imdb.com/title/tt0112966/>

Google Earth – The scary side

What some people fear is happening already

(Go to link)

<http://www.youtube.com/watch?v=fPqV6-gnQaE>

4D Globe – YouTube Video

A 4D Globe – it's very interesting for what you can do with it.

(Go to link)

http://www.youtube.com/watch?v=hN_oLwe75C0&feature=fvw

(Contribution from Dean Sayers)

Cartography book review (Humour)

Silly Inventions with Brian Forbes Cartography Book (PART 1)

(Go to link)

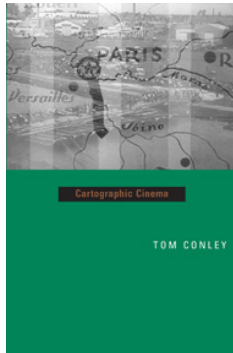
<http://vodpod.com/watch/1260283-invention-with-brian-forbes-comedy-series-astounding-book-author>

Silly Inventions with Brian Forbes Cartography Book (**PART 2**) – Parental guidance recommended

(Go to link)

<http://vodpod.com/watch/2105528-silly-inventions-with-brian-forbes-cartography-book-author-r>

BOOK > Cartographic Cinema



Tom Conley

University of Minnesota Press

\$26.50 Paper

ISBN: 0-8166-4357-1

ISBN-13: 978-0-8166-4357-8

Cartographic Cinema examines the affinities of maps and movies through comparative theory and close analysis of films from the silent era to the French New Wave to Hollywood blockbusters. In doing so, Conley reveals that most of the movies we see contain maps of various kinds and almost invariably constitute a projective apparatus similar to cartography. In addition, he demonstrates that spatial signs in film foster a critical relation with the prevailing narrative and mimetic registers of cinema.

Conley convincingly argues that the very act of watching films, and cinema itself, is actually a form of cartography. Unlike its function in an atlas, a map in a movie often causes the spectator to entertain broader questions—not only about cinema but also of the nature of space and being.

http://www.upress.umn.edu/Books/C/conley_cartographic.html

Historical Maps

Madaba's Jerusalem Mosaic Map



This 6th century mosaic map of Jerusalem was found under the floor of Madaba's St George's Church. The mosaic was probably made during the reign of the Emperor Justinian (AD 527-65) and hold significant historical value.

<http://www.flickr.com/photos/cybjorg/134315684/>

Trinitarian map



Clover-shaped map of the world, with Jerusalem at the centre of the world, according to medieval theoretical geography.

<http://www.flickr.com/photos/69814458@N00/120818928/>

Imperial Federation, map of the world showing the extent of the British Empire in 1886



Everything about the design of this elaborately decorated world map glorifies the late-19th-century British Empire. Cartographically it used a Mercator projection centered on the Greenwich Prime Meridian, placing Great Britain just above the map's central focal point. The Greenwich Prime Meridian (near London) was adopted as the international standard in October 1884. The British Isles, as well as all of the British colonies spreading out to the east and the west, were highlighted with red, while other geographical areas were left blank with only a minimum number of place names. In addition, an inset box was placed near each of the major colonies, listing statistics about geographical area, population, and trade. The words "Freedom, Fraternity, Federation," suggesting a peaceful co-existence within the British Empire, were prominently placed along the map's top margin, but the remainder of the map's illustrations imply "colonialism." At the bottom center Britannia is seated on top of the world ruling over her subjects, represented by a variety of animals and costumed figures. India, quickly identified by an elephant and a tiger, appears in the lower left corner, while Australia, including a kangaroo and a sheep, is shown in the lower right. Using the Mercator projection in constructing this thematic map may have not been the most appropriate choice because it greatly exaggerates the size of Canada. However, since this projection is best used for navigational purposes, it was a reasonable choice. Considering the British Empire thrived on ocean-going transportation, the use of this projection would have provided a familiar image for the British public.

<http://www.flickr.com/photos/normanbleventhalmapcenter/2710800068/>

David Rumsey Maps 6



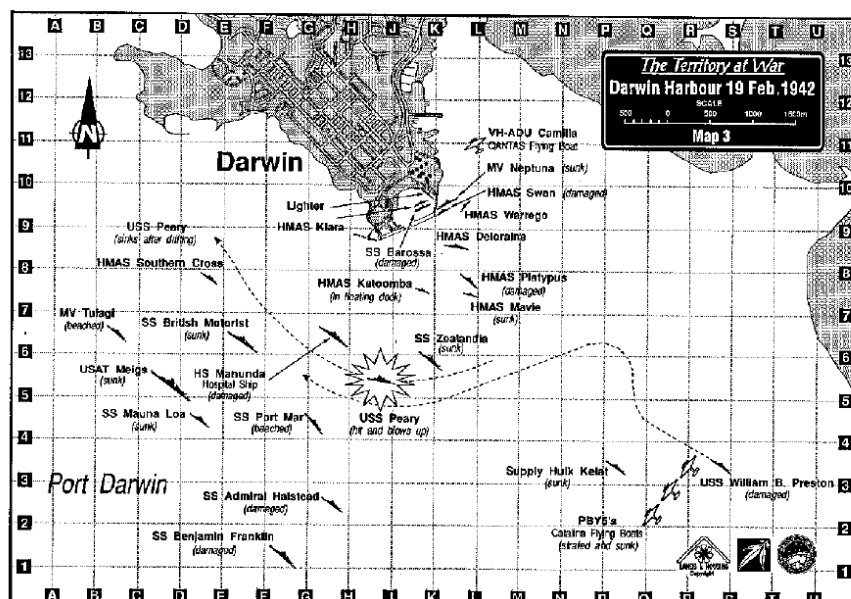
Exploring the David Rumsey Maps regions, one of the most fascinating groups of sims in SL. This is an immense, terraformed map of Yosemite.

<http://www.flickr.com/photos/zikquesti/3260104133/>

The Bombing of Darwin

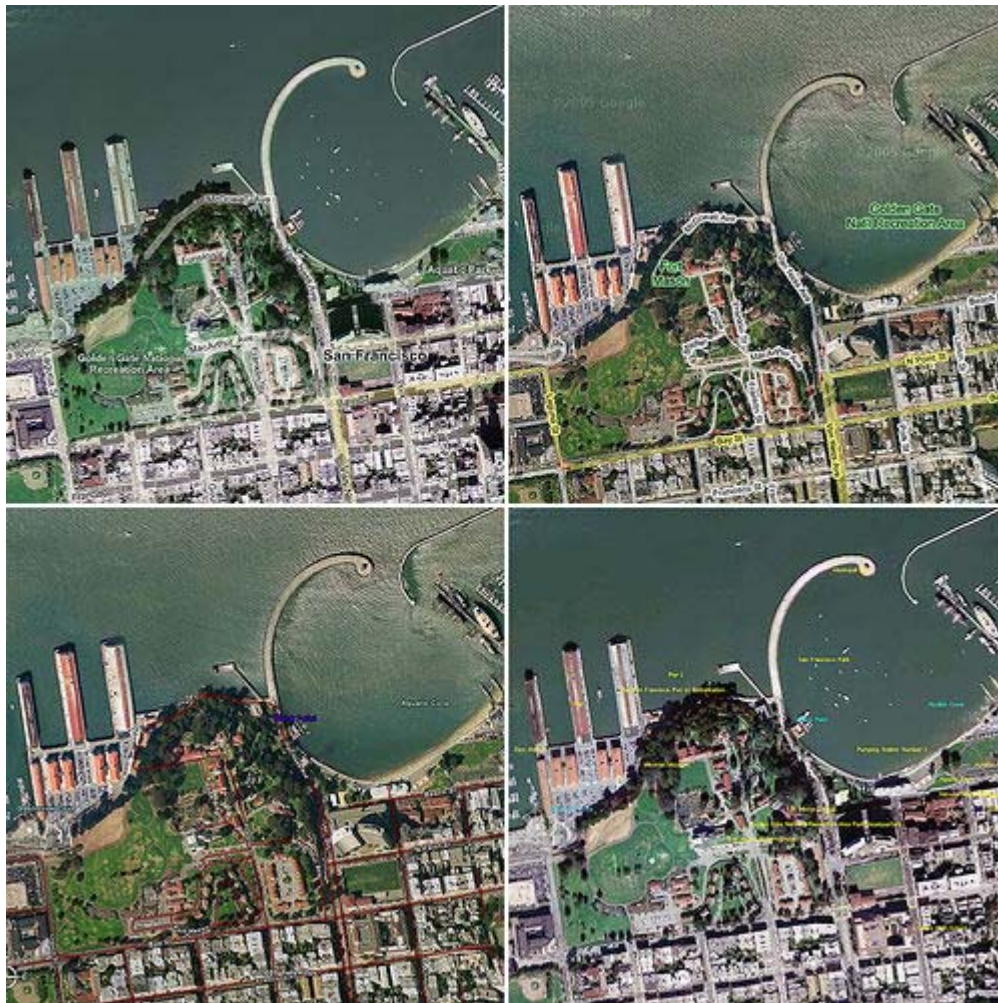
Darwin was bombed twice on 19 February 1942. The first raid was centred on the harbour. But it was also in this raid that the Post Office received a direct hit. The second raid that day centred on the RAAF Station. Many planes were destroyed or damaged.

After 19 February there were another 62 bombing attacks on Darwin and other places in the Top End of the Northern Territory. The last raid was on 12 November 1943.



From "The Territory at War – Mapping Skills Kit " produced by The Northern territory National Trust, The Australian Institute of Cartographers and the Department of Lands & Housing

Map Product Comparison



A comparison between Virtual Earth, Google Maps, Google Earth and NASA World Wind.

<http://www.flickr.com/photos/strangnet/28182773/>

On a Lighter Note

Questions posted on an Australian Tourism Website with the answers from the website officials.

Q: *I want to walk from Perth to Sydney, can I follow the railroad tracks?* (Sweden)

A: Sure, it's only three thousand miles, take lots of water.

Q: *Can you give me some information about hippo racing in Australia?* (USA)

A: A-Fri-ca is the big triangle shaped continent south of Europe.

Aus-tra-lia is that big island in the middle of the Pacific which does not ... Oh forget it. Sure, the hippo racing is every Tuesday night in Kings Cross. >

Q: *Which direction is North in Australia? (USA)*

A: Face south and then turn 180 degrees. Contact us when you get here and we'll send the rest of the directions.

Q: *Can you send me the Vienna Boys' Choir schedule? (USA)*

A: Aus-tri-a is that quaint little country bordering Ger-man-y, which is....Oh forget it.
Sure, the Vienna Boys Choir plays every Tuesday night in Kings Cross, straight after the hippo races.

Reflection

Security is a good map.



<http://www.flickr.com/photos/alastairhumphreys/1453048765/>