



David Fraser

National President
c/- School of Mathematical and Geospatial Sciences
RMIT University
GPO Box 2476V, Melbourne, 3001

Tel: +61 3 9925 3265 Fax: +61 3 9663 2517
david.fraser@rmit.edu.au
MSIA website: <http://www.mappingsciences.org.au/>

eCARTO newsletter August 2009

An occasional electronic newsletter for members of the MSIA – contributions welcome.

=====

If you have any brief items of interest to fellow MSIA members please email them to david.fraser@rmit.edu.au for eCARTO. If you have more substantial articles please send them to greg.heron@nt.gov.au for your magazine "Mapping Sciences National".

PLEASE INVITE ONE PERSON TO BECOME A MEMBER OF THE MSIA.

Membership application can be undertaken by visiting

<http://www.mappingsciences.org.au/member.htm>

*"Like many other disciplines and professional institutes, we are, at this time, experiencing pressures for change which are being imposed by the national economic situation and the impact of new technology." (Dex Johnston, Australian Institute of Cartographers President, **March, 1985**)*

CONFERENCES UPDATE

24th International Cartography Conference

15–21 November 2009

Santiago, Chile

(Cheap airfares to South America are now available)

<http://www.icc2009.cl/>

Spatial Sciences Conference 2009 - Spatial Diversity

From Monday, 28 September 2009

To Friday, 02 October 2009

Every day

Venue: Adelaide, South Australia 28 September – 2 October 2009

Conference Theme: Spatial Diversity

Bringing diverse spatial communities together SSC2009 will celebrate a spatial approach to the world by bringing together diverse elements of industry and community to discuss the use of spatial information.

Building on the traditional areas of spatial science, the conference will provide an open forum for the exchange of ideas between such diverse areas as Defence, Mining, Education, Emergency Management and Environment.

<http://www.ssc2009.com/>

3RD SERIOUS VIRTUAL WORLD CONFERENCE

17TH September 2009,

Coventry Technology Park

An increasing number of large and small organisations are using virtual worlds to meet, train, work and simulate working situations. In this difficult economic climate, Virtual Worlds can help your business get a competitive edge and save money! Hosted by the globally renowned Serious Games Institute in Coventry this conference will show how Virtual World technologies are being employed by real businesses and how they can benefit yours !

www.seriousvirtualworlds.net

4th International 3D Geoinfo Workshop

The program committee of the **4th International 3D Geoinfo Workshop** is pleased to invite you to their workshop, which will take place in Ghent (Belgium) on **November 4th and 5th 2009**. This workshop aims at bringing together international state-of-the-art research and facilitating the dialogue on emerging topics in the field of 3D geo-information. You can find all the information and a registration form on the following website: <http://www.3dgeoinfo.org/>

The organizers would like to draw readers attention to the workshop on **Behaviour Monitoring and Interpretation (BMI'09)**, which will take place on **November 3th 2009** at the same venue as 3D Geoinfo. The aim of this workshop is "studying moving objects in a three-dimensional world". Additional information and a registration form can also be found at <http://www.3dgeoinfo.org/>.

Accuracy 2010

July 20-23, 2010

Leicester, UK

International Spatial Accuracy Research Association (ISARA)

Ninth International Symposium on Spatial Accuracy Assessment in Natural Resources and Environmental Sciences

All topics concerned with spatial accuracy and uncertainty in a natural resources and environmental sciences context are appropriate

<http://www.accuracy2010.org/>

EARTH wins Best Atlas at the IMTA (Asia Pacific) Awards 2009

The International Map Trade Association (IMTA) honoured **EARTH**, the world's most detailed atlas, with both the Best Book Based Award and the Best Overall Map Product (Graham Stanton Award for Excellence).

The IMTA (Asia Pacific) Awards 2009 were held in Darwin on 7th and 8th of August and recognised the best cartographic-related products produced in the last year in all of Australasia.

Millennium House gathered a team of more than 100 international cartographers, oceanographers and geographers to produce and collate 355 maps, covering 194 countries, and numerous territories and dependencies. Containing 580 pages of maps and information, *EARTH* measures 610 x 469 mm and weighs more than 20kg taking up 580 pages and weighing over 20 kilograms. The IMTA Awards acknowledge the true legacy of *EARTH* and congratulates all those who were involved in producing it.

Mr Damien Demaj (Australian cartographer) was the chief cartographic consultant for the production of the **EARTH** Atlas. <http://www.demap.com.au/>

The International Map Trade Association (IMTA) (according to the website) is the foremost worldwide organization of the mapping, geospatial and geographic information industry. IMTA is a voice and resource for individuals, companies, firms and institutions who are engaged directly or indirectly in the production and sale of maps, globes, travel guides, spatial information and related products and materials.
<http://www.maptrade.org/>

MSIA David McInnes Memorial Prize & Geospatial Science Student Dinner

Mr. Marc Milinkovic was presented with the Mapping Sciences Institute, Australia, David McInnes Memorial prize at the RMIT University, Geospatial Science Students Association dinner held on Thursday 27th August. The prize is presented to the student with the best academic results in the final year of the Bachelor of Applied Science (Cartography and Geographical Visualisation) student for 2008.

Mr Damien Demaj, an RMIT Bachelor of Applied Science - Geomatics graduate and chief cartographic consultant for the production of the **EARTH** Atlas, was the speaker at the dinner. To say his talk was inspiring and the atlas a great attraction would be an understatement.

The photograph below, taken at the dinner, shows **Marc Milinkovic** (third from left) with **Damien Demaj** (third from right) with (from right) cartography lecturer Gita Pupedis, David Fraser (MSIA National President), Professor William Cartwright (International Cartographic Association President) and Associate Professor Chris Bellman (Head of Geospatial Sciences at RMIT)



We should all take heart when we see the new generation of smiling students who are passionate about cartography, such as these budding members of the mapping sciences industry.



International Cartographic Association

The International Cartographic Association has the following Commission accessible through the following link: <http://cartography.tuwien.ac.at/ica/index.php/Commissions/Commissions>

Pick a topic of interests and you may find out what is happening at the international arena in the topic area.

COMMISSIONS

- + Commission on Cartography and Children
- + Commission on Digital Technologies in Cartographic Heritage
- + Commission on Education and Training
- + Commission on Generalisation and Multiple Representation
- + Commission on Geospatial Analysis and Modeling
- + Commission on Geospatial Data Standards
- + Commission on Geovisualization
- + Commission on the History of Cartography
- + Commission on Management and Economics of Map Production
- + Commission on Mapping from Satellite Imagery
- + Commission on Map Projections
- + Commission on Maps and Graphics for Blind and Partially Sighted People
- + Commission on Maps and Society
- + Commission on Maps and the Internet
- + Commission on Marine Cartography
- + Commission on Mountain Cartography
- + Commission on National and Regional Atlases
- + Commission on Planetary Cartography
- + Commission on Theoretical Cartography
- + Commission on Ubiquitous Mapping
- + Commission on Underrepresented Groups and Cartography
- + Commission on Use and User Issues

For example:

The following items are available on the Commission on Education and Training website:

- **Undergraduate cartography courses** from around the world
- **Internet cartography teaching modules** for self paced learning
- Links to **sister societies**:
 1. AGILE
 2. FIG
 3. IGU
 4. ISPRS

Go to: <http://lazarus.elte.hu/cet/>

Rumours of the death of paper maps exaggerated

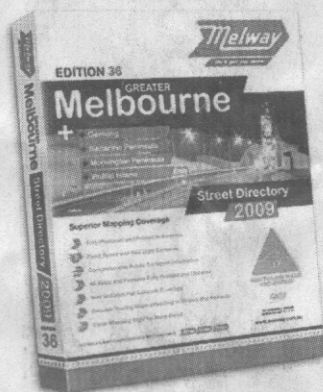
By **DANIELLA MILETIC**
CONSUMER AFFAIRS REPORTER

LIKE many in the motoring industry, Neil James thought that in-car digital GPS technology made the future of printed maps and street directories look grim. But now he is not so sure.

Mr James, the RACV's general manager for travel and tourism, said that as sales of global positioning devices have boomed, so too has the demand for more traditional cartography tools.

The RACV has reported a surge in sales of printed maps this year, and demand for Melway directories is also strong. "Two or three years ago, the growth in GPS sales and the move towards online mapping ... made me think it would mean the end of printed maps," Mr James said. "And we were seeing sales decline." But sales have picked up again.

Anecdotal evidence suggests the lift is partly due to more people choosing driving holidays because of the economic downturn. "The thing a



Many drivers still use their Melway.

GPS unit is good for is telling you how to get to a place, but it doesn't really tell you where you are travelling and what's around you," Mr James said.

The head of Ausways, which publishes Melway, agreed. "Our research shows that people still use the book to work out and plan trips and also to drive there," said Murray Godfrey. "Then to get around a country town they will buy a local map or sometimes use their nav unit, but even the nav units are really out of date."

The company is reporting that sales of the directories are strong despite more cars being fitted with GPS technology, which is also more common in mobile phones.

Melway sells for \$59.95 — but usually is discounted — and most maps cost less than \$4, according to the RACV. Prices for GPS units from retailer Navman's latest range, My Series, cost between \$299 and \$599.

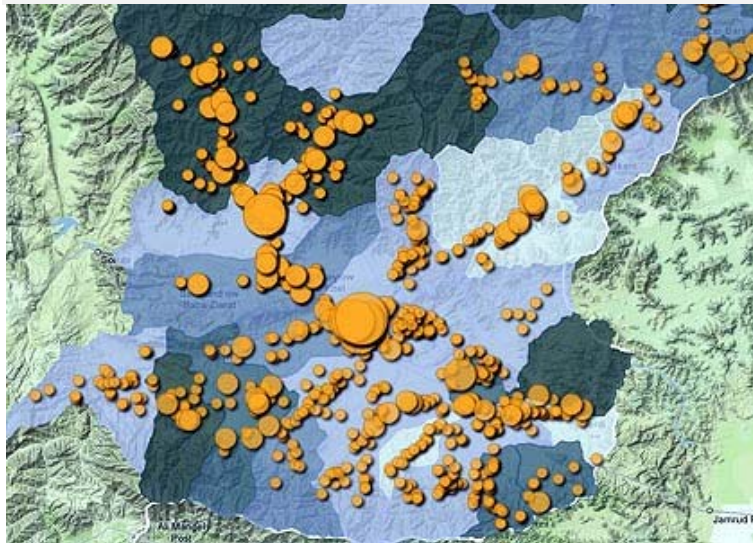
Karina Keisler, a spokesperson for Sensis-owned Universal Publishers, which make UBD and Gregory street directories, said consumers like choice. "Look in the back seat of anyone's car and you are likely to find a street directory. More and more though, you will also find a GPS device in the front."

Wendy Hammond, of Navman, conceded maps and directories are more tangible. "You can unfold the map and can look in one glance at 2000 kilometres. You can do that on a GPS too ... but I think there's that tangibility." However, she said drivers' use of both a GPS unit and a directory was a transitional trend, not long term.

The Age, Monday 24th August

The changing face of technology?

USAID uses online map to track Afghan election incidents



August 21, 2009 - 2:05PM

WASHINGTON - The US Agency for International Development (USAID) has teamed up with private aid groups and technology companies to develop an online map tracking election-related incidents in Afghanistan.

"This open data mapping project is one way for everyone to increase transparency as the elections roll out," USAID said in a statement.

"It allows anyone anywhere to report an incident in the name of more meaningful democratic results for better governance," it said.

The map is located at news.geocommons.com/afghanistanelection09.

<http://www.theage.com.au/technology/technology-news/usaids-uses-online-map-to-track-afghan-election-incidents-20090821-et7a.html>

Maps take a turn for the better

Gordon Farrer

July 16, 2009

Whereis.com maps now feature landmarks, writes Gordon Farrer.

The importance of landmarks for navigating has long been apparent - but modern technology has been slow to catch on.

Now online mapping website Whereis.com, in conjunction with University of Melbourne, has introduced landmarks to its map directions service.

Traditionally, online map directions have relied on turn-by-turn instructions that use distances and street names.

The addition of landmarks - a first in Australia, says Whereis.com marketing manager Fred Curtis - is a response to user desire for "more intuitive directions, better connected to the real world".

Landmarks do the job because they are fundamental to how humans communicate, remember and use route information: turn left at McDonald's, turn right past the Holden dealer and go straight past the university.

<http://www.theage.com.au/digital-life/cartech/maps-take-a-turn-for-the-better-20090714-dk3l.html>

Mysterious Burmese facility revealed on Google Earth

Stephen Hutcheon

August 11, 2009 - 3:00PM



The "interesting enigma" in central Burma, which some pundits say may be part of a clandestine nuclear operation. *Photo: Google Earth*

"Amateur spies and armchair sleuths using Google Earth have discovered a suspicious development in the Burmese jungle thought to be linked to the pariah state's clandestine nuclear program."

<http://www.theage.com.au/technology/technology-news/mysterious-burmese-facility-revealed-on-google-earth-20090810-effa.html>

Odd tricycle mapping Paris streets for Google

HELENE GOUPIL

August 8, 2009



Parisians and tourists, relax. That goofy looking tricycle equipped with loads of high-tech equipment roaming the streets is NOT some mad scientist's invention on the rampage.

The three-wheeler is a sight with its long pole holding nine cameras, a GPS, a computer and a generator. But the contraption tooling around the French capital needs all that gear to do its job _ adding three-dimensional images to Google's Street View Maps.

<http://news.theage.com.au/breaking-news-technology/odd-tricycle-mapping-paris-streets-for-google-20090808-ed65.html>

SECTION 2 : SPECIAL FEATURE - Linguistic Cartography

Toponymy

Toponymy is the study of geographical names> Geographical names can be used to track the movement of peoples around the world over time. A course is available at

<http://lazarus.elte.hu/cet/modules/toponymy/index.html>

Toponymy (Ferjan Ormeling, The Netherlands)⁺

What's in a name?

Australia's geographical names

Welcome to this site, which has been developed by the Committee for Geographical Names in Australasia to provide primary teachers with an education resource to support the [*What's in a Name*](#) CD-Rom/video. What's in a Name highlights the significance of geographical names and the part they play in our everyday lives. It stars Ernie Dingo telling the story of how geographical places get their names and explains the role of the Committee for Geographical Names in Australasia, the committee that looks after them. I am sure you will find it both entertaining and informative. (Go to link)

<http://www.icsm.gov.au/cgna/lesson/index.html>

Australia – Place Names Search

Use this search to find the location of places in Australia.

Go to link:

<http://www.ga.gov.au/map/names/>

Strange place names



Taumatawhakatangihangakoauauotamateaturipukakapikimaungahoronukupokaiwhenuakitanatahu is the [Māori](#) name for a hill, 305 metres (1,000 [ft](#)) high, close to [Porangahau](#), south of [Waipukurau](#) in southern [Hawke's Bay](#), [New Zealand](#). The New Zealand Geographic Placenames Database, maintained by Land Information New Zealand, records the name as "Taumatawhakatangihangakoauauotamateapokaiwhenuakitanatahu", a hill at 40.3480 S, 176.5321 E.^[1] At 85 letters, it has been listed in the *Guinness World Records* as one of the [longest place names](#) in the world.

<http://en.wikipedia.org/wiki/Taumatawhakatangihangakoauauotamateapokaiwhenuakitanatahu>

Why New Zealand's North and South Island have gone west

From The Times

April 22, 2009

The New Zealand Geographic Board has ruined everything, however, by discovering that North Island and South Island are not the legal names for the north and south island. After spending several years exploring possible Maori names for the islands, which make up 95 per cent of New Zealand – the tiny and sparsely populated Stuart Island is the third – the Geographic Board realised that the islands had never officially been given names. Now they are asking New Zealanders what they would like their islands to be called.

"While researching this issue, we noted that North Island and South Island are actually not official names under our legislation, despite their common long-term usage," said Don Grant,

the chairman of the National Geographic board which assigns and approves the use of place names for New Zealand.

<http://www.timesonline.co.uk/tol/news/world/article6143787.ece>

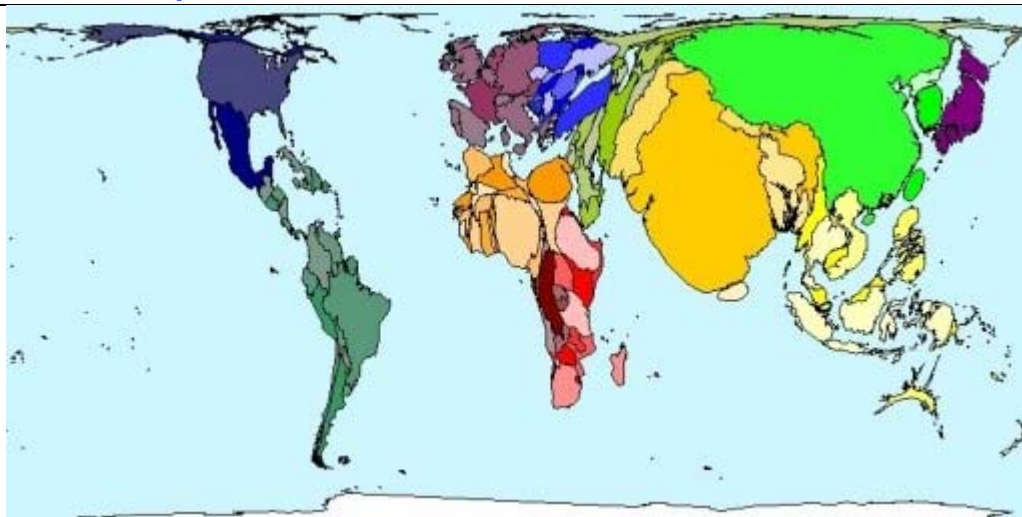
“Cartography” in different languages



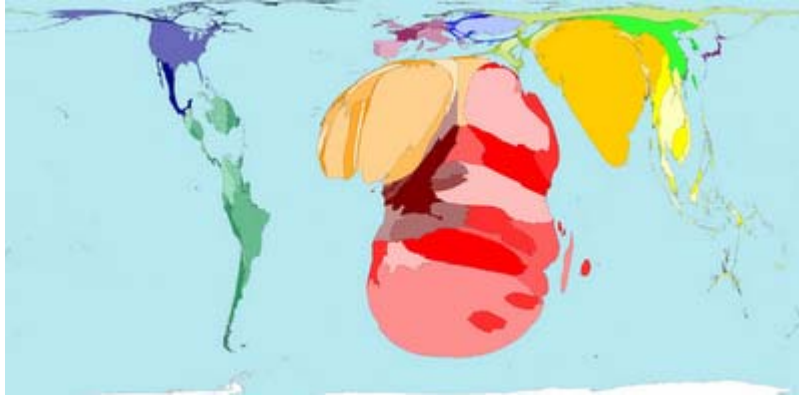
Literal Symbols Research – Morphology – The structure of words

According to a research at an English university, it doesn't matter in what order the letters in a word are, the only important thing is that first and last letter is at the right place. The rest can be a total mess and you can still read it without a problem. This is because we do not read every letter by itself but the word as a whole.

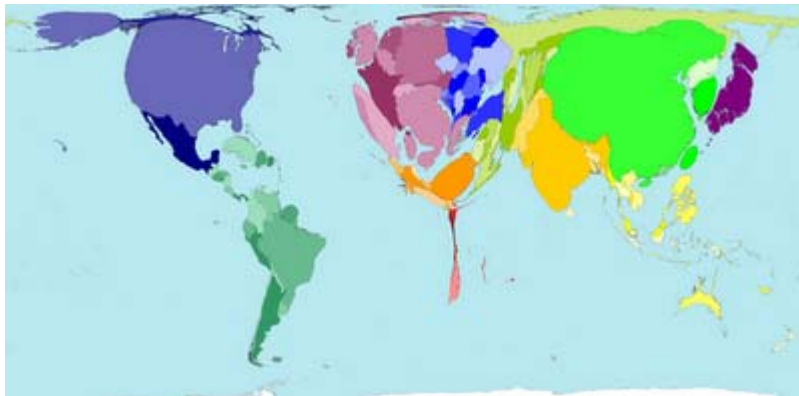
Feature Map Set



Countries sized by population



Countries sized by HIV-rates



Countries sized by access to physicians

http://amazing-maps.blogspot.com/2008_05_01_archive.html

Cartographic Resources

GEOInformatics Newsletter

No.5 July/August 2009 Volume 12

<http://my.sparg-mail.com/vc/bYWi>

Defence Imagery and Geospatial Organisation

The Defence Imagery and Geospatial Organisation (DIGO) was established under a Cabinet Directive on 8 November 2000 by amalgamating the Australian Imagery Organisation and Directorate of Strategic Military Geographic Information, and the Defence Topographic Agency. On 2 December 2005 DIGO came under the provisions of the amended Intelligence Services Act 2001 (ISA). (Go to link and click on images mosaic)

<http://www.defence.gov.au/DIGO/#>

The British Cartographic Society



The British Cartographic Society promotes all aspects of cartography to a wide range of potential users. Find out about maps and cartography, careers in cartography and current [job vacancies](#). Also join the [BCS Forum](#) to discuss anything map related!

<http://www.cartography.org.uk/>

Fundamentals of Mapping

The Intergovernmental Committee on Surveying and Mapping (ICSM) has designed this site to provide a comprehensive general overview of maps, mapping, cartography and map production. **It is not intended to be a definitive reference, but rather to supply a consolidated summary of mapping concepts, principles and practice.**

Hyperlinks are provided to other sites which offer more detailed information. Also, it is planned that existing pages will be continually up-dated and additional pages added from time-to-time.

<http://www.icsm.gov.au/mapping/index.html>

Mathematics of cartography

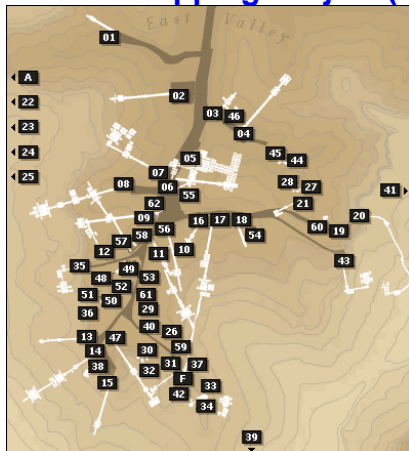


Neat lessons in cartography from a mathematical point of view.

Copyright 1996-2008 Cynthia Lanius

<http://math.rice.edu/~lanius/pres/map/>

Theban Mapping Project (TMB) – Atlas Project

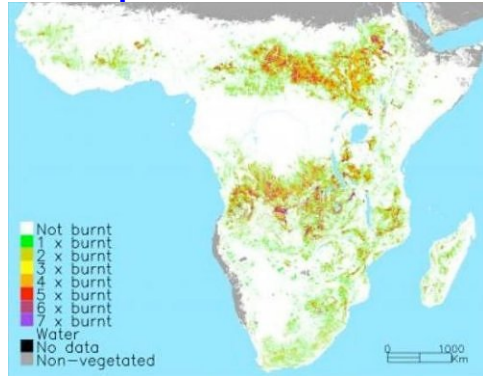


Valley of the Kings - Comprehensive archaeological database of Thebes

During the last decade, the TMP has concentrated on the Valley of the Kings. Modern surveying techniques were used to measure its tombs. From the data collected, the TMP is preparing 3-D computer models of the tombs.

<http://www.thebanmappingproject.com/sites/>

The Map of Earth's Fire Scars



The visual impression of fire scars spans from 2000 to 2007 and was created by Geographer Dr Kevin Tansey of the University of Leicester.

The map graphically illustrates the destruction of roughly 4.5 million km² of vegetation that is caused by fire every single year. To put this in perspective, the area is bigger than a country like India, which is enormous!

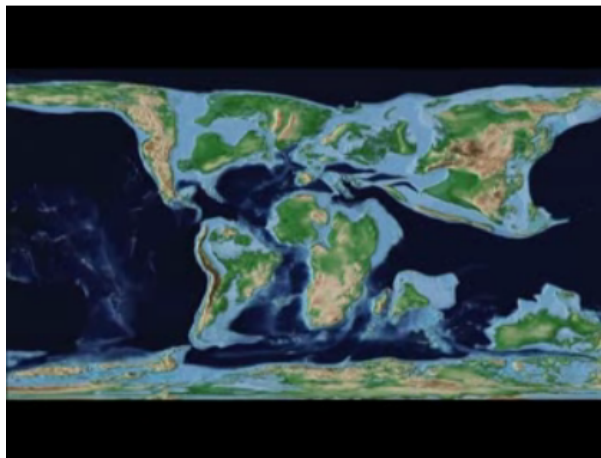
<http://www.environmentalgraffiti.com/sciencetech/the-map-of-earths-fire-scars/1206>

History of the Universe timeline

This site tells the story of the history of the universe. Click Earlier and Later to follow the story.

<http://www.historyoftheuniverse.com/tl1.html>

650 Million Years of Earth Transformation in One Minute on Video



In this short video you can see all transformations on planet Earth over the years for a period of 650 million years. You can see also how the Earth will look like after 250 million years in the future.

<http://www.detector-pro.com/2009/06/650-million-years-of-earth.html>

Australia through time

Australia through Time charts the history of Australia from a geological perspective. Explore the evolution of life, palaeogeography, sea levels, climate change and Australia's major mineral deposits.

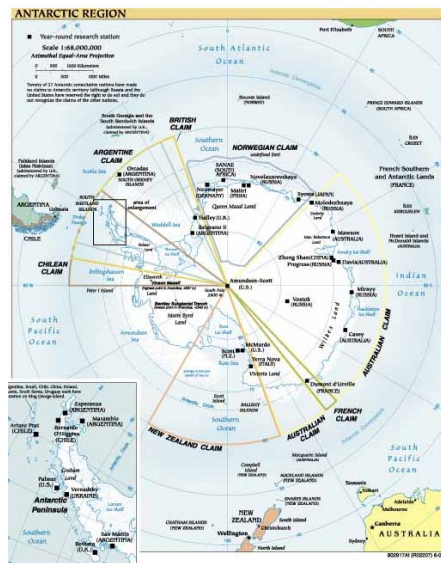
The geological time scale is based on A Geological Time Scale 2004 Gradstein Ogg & Smith.

Downloads are available in a number of formats

<http://www.ga.gov.au/education/geoscience-basics/aus-through-time.jsp>

World maps

A valuable site to access reference maps from around the world.



http://www.classbrain.com/art_cr/publish/world_maps.shtml

Cartographic snippets

Global News

Global news on spatial information is available on the **Cooperative Research Centre for Spatial Information** site.

<http://www.crcsi.com.au/pages/news.aspx?NewsArticleID=467&Display=1>

NOTE: This CRC has just won further funding from the federal government which can only be a good thing for the industry as a whole.

397 – Eliminating the Bottom 5%

Filed under: [Uncategorized](#) — strangemaps @ 6:20 am

July 2, 2009

How would you eliminate almost half the planet by subtracting just 5% from it? This map shows you how: delete the countries that constitute the **bottom 5% of global GDP** contributors, and you scrap almost 3 billion people from the equation.



<http://strangemaps.wordpress.com/>

Map Games

The website <http://www.maps.com/FunFacts.aspx> has a number of interactive map games designed to enhance geographical knowledge and map use.



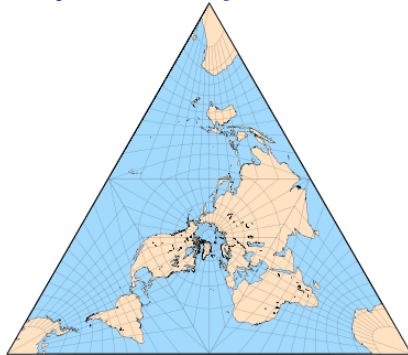
Origami Maps

Sunday April 20th 2008

Origami seems to be a theme of the moment. First Google made the odd statement that "Mapping has come a long way from the origami paper creations of the past". Now a court case is the battleground between two mapping companies fighting over the [rights to origami techniques](http://gislounge.com/origami-maps/) for map folding.

<http://gislounge.com/origami-maps/>

Polyhedral Maps



Polyhedral maps are completely unrelated to "polyhedral" projections, used in several variants circa 1900 for large-scale mapping; essentially, they mapped the spheroid in small separate trapezoidal regions which, if joined, would comprise part of a polyhedron.

<http://www.progonos.com/furuti/MapProj/Normal/ProjPoly/projPoly.html>

Global impression



Indonesian activists roll a giant inflatable globe on the street during a "clean air, save climate" campaign in Jakarta, Indonesia.

<http://www.smh.com.au/news/environment/bali-talks-to-seek-global-climate-deal-in-2009/2007/12/02/1196530471125.html>

What a wonderful world

Siberian landscape.



Sophisticated Moscow road junction near Horoshovskoe highway.



2009 AMC/MSIA National Conference

Held March, 2009.

John McCormack (MSIA National councillor) has recently distributed to attendees, a CD of papers presented at the AMC//MSIA National Conference in Brisbane, 6-18 March 2009. The conference theme was "*300 Years of Mapping: The past 150 years & next 150 years*". Thanks John. The titles of the papers are given below. Members requiring further information should contact John McCormack, MSIA conference committee member at mccormack.j@optusnet.com.au

Two Decades of Interactive Multimedia Cartography: Reflections and Directions

Professor William Cartwright, RMIT University (Keynote)

The Neglect of Baudin's Manuscript Charts of the Victorian Coastline

Greg Eccleston

Edgar Reginald Deane (1836-1912). A Colonial Surveyor's story recorded in the collections of the National Library of Australia and the National Museum of Australia.

Denis Shephard

Mapping to Defend Australia's North in the Second World War

Trevor Menzies

Designing a Nocturnal- a Volvelle for Finding Time

Greg Eccleston

Marooned Mariners and Mudmaps: The Search for the Ring of Stones

Rupert Gerritsen

Finding the HMAS Sydney

Ted Graham AM

History: more than words: practical applications of GIS and CAD in historical research

Dr Thom Blake

The Evolution of Cartographic Education and Training in Australia

David Fraser

Constructing space – Issues for the planning of Human Services

Brian Cooper

The Future of Australia's National Mapping Program

Greg Scott

Cartography in the 21st Century

David Moore

EARTH From Concept to Production. The Challenges of producing the Worlds Largest Atlas.

Damien Demaj

Curriculum Mapping of the Spatial Science Program, QUT: What was the "Cartography" Journey?

Robert Webb

A beginner's guide to mapping a third World City: Ubon Ratchathani, Thailand

Dr Brendan Whyte

The 1939 Australian Map of Antarctica

John Manning

Pilot to Ground Control Over....

Actual exchange between pilot and control tower

/Tower: //*/"Delta 351, you have traffic at 10 o'clock, 6 miles!" */

/Delta 351: //*/"Give us another hint! We have digital watches!"/*/// //